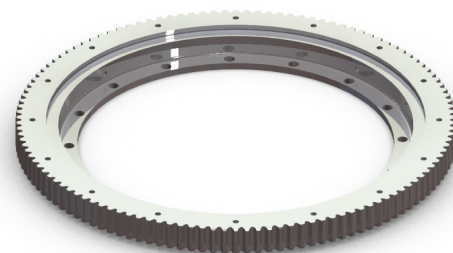
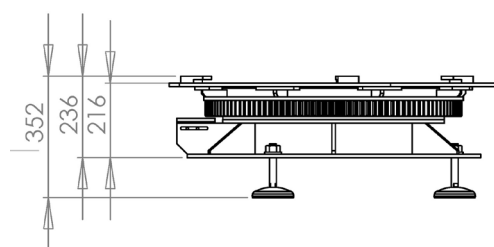
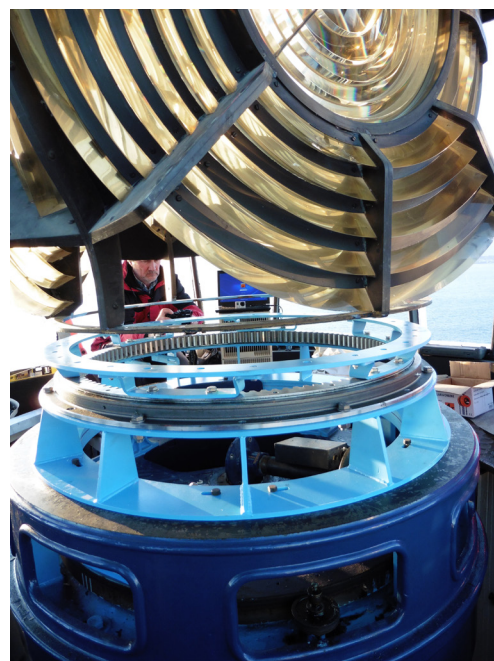


Mercury free revolving pedestal solution

GISMAN revolving pedestal is the ideal solution for lighthouse rehabilitation, where it is recommended to keep the historical lens without mercury bath.

- Custom sized product to fit existing lens dimensions and weight
- Mercury free solution
- Ball-bearing system
- Designed to suit lens up to 2500kg
- Structure in painted steel
- Equipped with a DC electronic brushless motor (power supply from 20 to 30Vcc)
- Adjustable rotating speed from 1 to 6 rpm with less than 1% precision
- Equipped with a greasing device
- Anti-vibration pads for seismic zone (as an option)



Specifications subject to change or variation without notice - Sept. 2015

