

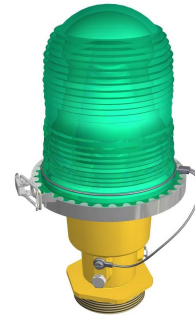
## Elevated Heliport Light

### Compliances:

- ICAO: Annex 14 - Volume II
- IEC: TS 61827
- NATO: STANAG 3619

### Manual:

- Instruction Manual **UT-MT-0675**



### Applications:

- The HEOL fixtures are of the **low intensity, omnidirectional, elevated** heliport lights.
- These fixture are designed to be **powered in parallel**.
- The field positioning shall be in compliance with the requirements of ICAO - Annex 14 or STANAG.

### Characteristics:

- Cast aluminium body, complete with E27 lampholder.
- Symmetric Fresnel clear, green or yellow lens, made of heat resistant glass fastened to the body by means of a stainless steel clamp. A silicon O-Ring between lens and body is provided for watertight with no use of any sealing.
- Cast aluminium breakable coupling which supports the fixture fastened to it by means of three screws. The coupling is provided with a yielding point and a 2" Gas male thread for a proper installation. For approach fixtures a suitable pole is placed between fixture and coupling, provided in several lengths up to 2 m
- Two cable leads or a cable lead with plug, in compliance with IEC 61823, are provided for power supply.
- A suitable grounding screw is provided.
- No optical adjustments are required after lamp or lens replacement

### Luminous Sources:

- 70/105 W halogen lamps 230 V or 100 W lamp 24 V, E27 base , 1000 hour rated life;
- Quick relamping with no use of special tools.

### Power Supply:

- Through transformer suitable for parallel circuit or directly in low voltage with no transformer use.

### Installation:

Fixtures equipped with breakable coupling can be screwed directly on an pipe elbow or on a tripod with three holes for pavement fastening.  
 Fixture can be also installed on a baseplate in compliance with FAA L-867 specification.

SPEC.	USE	COLOUR		
		CLEAR	GREEN	YELLOW
ICAO	Approach	100-105		
ICAO	F.A.T.O.	100-070		
ICAO	T.L.O.F.		100-070	
STANAG	Landing Direction			100-070
STANAG	Approach	100-070		

### How To Order:

**HEOL - I - A - G - 100 - A - P - 006**

**Basic Part Number:**

**Compliances:**  
 I = ICAO  
 S = STANAG

**Use Code:**  
 A = Approach  
 D = Landing Direction  
 F = F.A.T.O.  
 T = T.L.O.F. - Perimeter Lights

**Colour:**  
 C = Clear  
 G = Green  
 Y = Yellow

**Lamp (Refer to Tabel A):**  
 100 = 100W 24V  
 070 = 70W 230V  
 105 = 105W 230V

**Power Supply:**  
 A = Cable Leads (L = 2 m)\*  
 B = Cable Lead with plug (L = 20 cm)\*

**Mounting Assembly:**  
 P = Mounting Pole, Breakable Coupling and Cable Lead INCLUDED

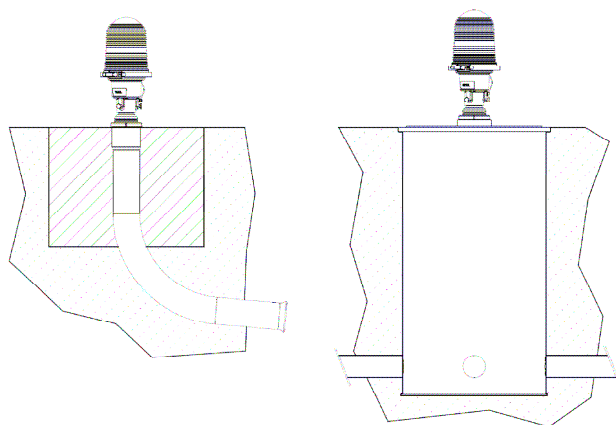
**Mounting Assembly Code:**  
 Refer To Tabel B

\* Exceeding over the breakable coupling.

POLE CODE	POLE LENGTH (in cm)
001	NO POLE
006	H min=335 mm
050	50
100	100
150	150
200	200

The TABEL B is given as an example only. You can order mounting poles of length as you need, but considering that the available steps are of 10 cm and pole included between 10 cm and 2 m.

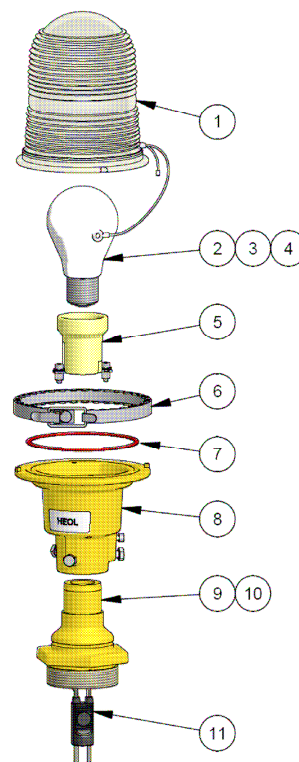
## Installation:



On a pipe elbow

On an FAA L-867 base  
With baseplate

## Renewal Parts:

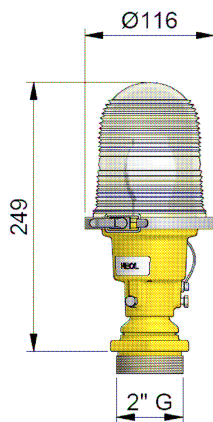


## Accessories:

[P/N]	Description
013.0010	Set of two ryton rings for receptacle support inside pipe elbow
013.0008	Galvanized steel pipe elbow with upper threaded end only (2" Gas)
315.3210	Galvanized steel pipe elbow with both threaded ends (2" Gas)
152.5721	Tripod for fixture complete with ring nut 2" Gas and grounding hardware
786.1001	Ring nut 2" Gas
323.2390	L-823 two-pole socket 1,5 m long
315.1228	Base L-867. Class IA, size B, 24" Deep
315.1062	Baseplate for L-867 base, size B, with 2" 11 Gas thread, gasket and cable clamp
011.1520	Transformer for parallel circuit, 100 W, 230/24V

[N]	[P/N]	Description
1	155.9055	Clear lens with metallic ring and hardware
1	155.9056	Green lens with metallic ring and hardware
1	155.9057	Yellow lens with metallic ring and hardware
2	760.1514	70 W halogen lamp, 230 V
3	760.1515	105 W halogen lamp, 230 V
4	760.1512	100 W lamp, 24 V
5	166.4070	E27 lampholder
6	334.4175	Stainless steel clamp
7	758.2030	O-Ring for lens
8	152.5720	Fixture body with hardware
9	303.6170	Standard breakable coupling
10	155.2504	Breakable coupling for approach fixture
11	323.2220	Cable lead with plug

## Overall Dimensions:



## Shipping Weight and Volumes:

	Fixture	Fixture with breakable coupling	Fixture with pole
Weight	1,0 kg	1,3 kg	1,7 kg
Volume	0,009 m <sup>3</sup>	0,009 m <sup>3</sup>	0,009 m <sup>3</sup>



Via 2 Agosto 1980, 11 40016 - S. GIORGIO DI PIANO - BOLOGNA (ITALY)  
tel: +39 051 6656611 - fax: +39 051 6650099  
e-mail: ocem@ocem.com - web: www.ocem.com